

Science

Week: 1

Book: Sindh Text Book Board

Grade # 4

Unit: 1 (Our body)

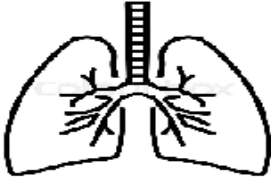
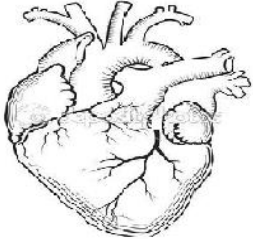
Page No: (1-16)

Total Marks (4)

1. Which of the following part of the human body is responsible for the digestion of food?
 - A. Stomach
 - B. Lungs
 - C. Mouth

2. The part of a human body that controls the overall movements in it is
 - A. bone
 - B. heart
 - C. brains

3. In the table given below, parts of a human body with their common disorders are shown. Write any **one** cause for each related with the disorders.

Body parts	Common disorders	Causes
	Asthma is a common breathing disorder.	
	Heart disease is high blood pressure, hardening of blood vessels and chest pain, heart attacks and strokes.	

Week: 2

Book: Sindh Text Book Board

Grade # 4

Unit: 1 (Our body)

Page No: (1-16)

Max marks (5)

1. One of the most common causes of ‘high blood pressure’ is
 - A. breathing in pollution.
 - B. fast eating.
 - C. stress and overweight.

 2. The largest part of the human body is
-

3. Write the key functions of the following body parts.

Body parts	Function
Eye	
stomach	
lungs	

Week: 3

Book: Sindh Text Book Board

Grade # 4

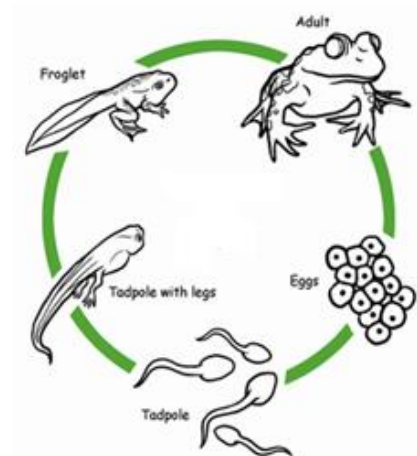
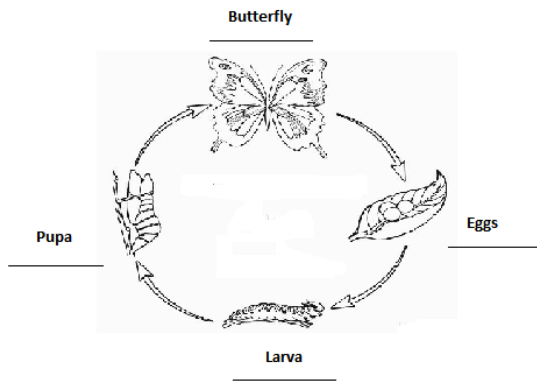
Unit: 2 (Characteristics and needs of living things)

Page No: (17-29)

Total Marks (5)

Answer the following questions.

1. A butterfly lays hundreds of eggs on/in the
 - A. leaves.
 - B. nest.
 - C. sand.
2. Compare the life cycle of a butterfly and write the difference and similarities between them.



Similarities	Differences
1.	1.
2.	2.

Week: 4

Book: Sindh Text Book Board

Grade # 4

Unit: 2 (Characteristics and needs of living things)

Page No: (1-16)

Total Marks (6)

1. A specific group of animals that belongs together and have some similar qualities are/is called
 - A. inheritance.
 - B. species.
 - C. offspring.
2. Differentiate between a living plant and a plastic plant. Place a (tick) in front each characteristics which is related to either plants.

Characteristics	A living potted plant	A plastic/paper plant
Is able to move		
Needs water and oxygen		
Doesn't need sunlight		

3. What are the factors necessary for both plants and animals to survive? Write **any two** of them.

Factors
1.
2.